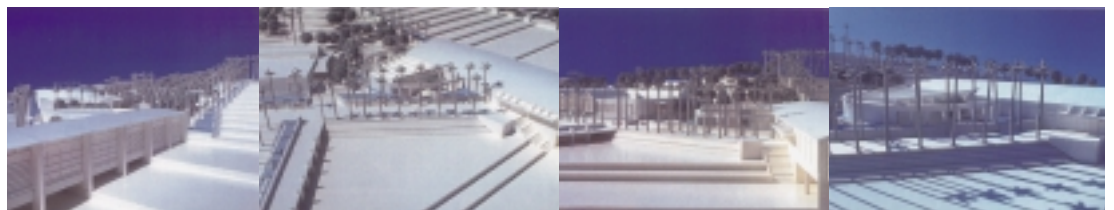
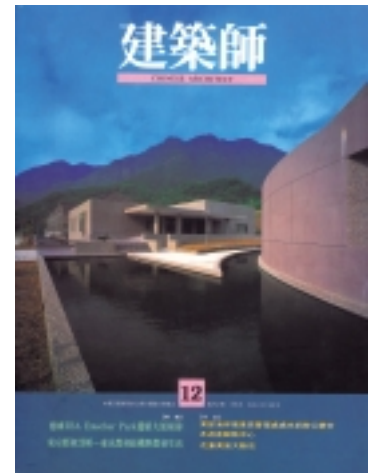
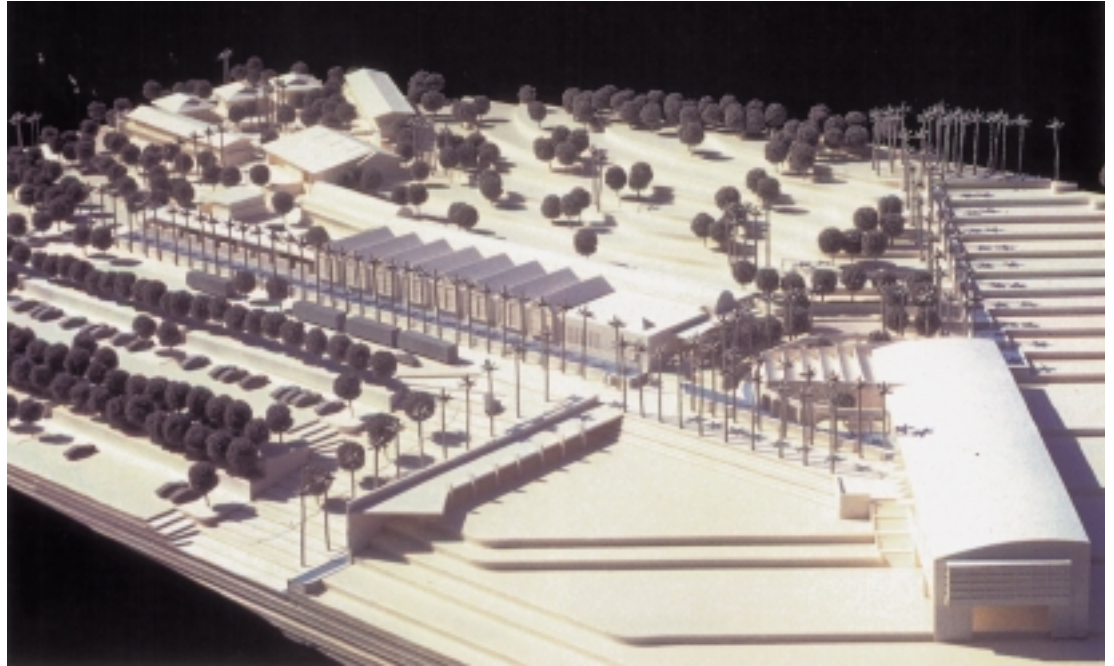


Park Headquarters, East Coast National Scenic Area, Taiwan
東海岸國家風景區管理處處本部辦公廳舍暨遊客中心（台灣東部）



50 Hectares

Landscape
Architecture

Conceptual
Architecture

50公頃
景觀建築

The architectural and landscape design is a contemporary reflection of the traditional Ami and Taiwanese elements. Components include a visitor center, administration facility, and staff residential complex. To “tell the story” of the region through design was a major goal of the project. 1995 CHINESE ARCHITECT 1st Design Award winner.

反映傳統阿美族與台灣特色的現代建築與景觀設計，包含遊客中心、行政大樓、及員工宿舍。本計畫的主要目標是希望透過設計手法，述說地方的故事。本案榮獲1995年台灣建築師雜誌設計首獎。